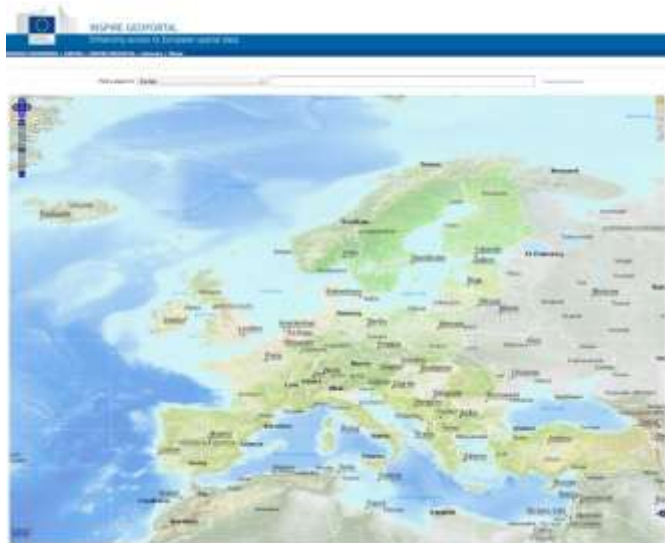




A few words on INSPIRE...

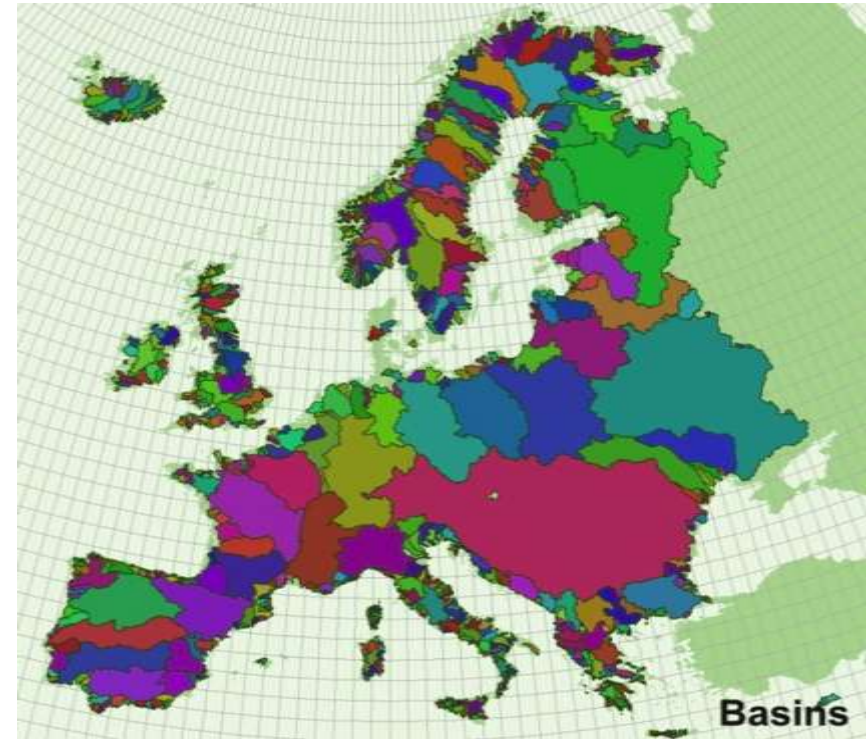


Max Craglia

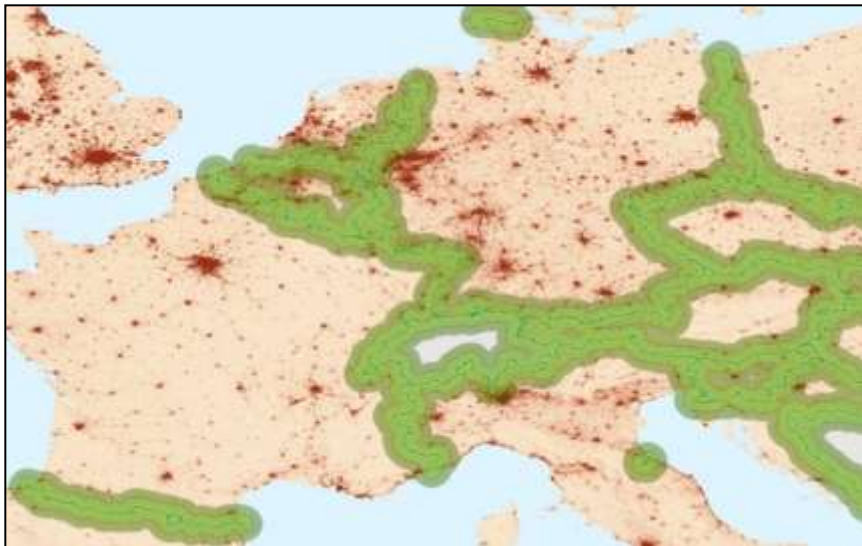


Why Europe needs a spatial data infrastructure (SDI)?

Natural Disasters and as well as other environmental phenomena do not stop at national borders!
20% of the EU citizens (115 million) live within 50 Km from a border



- 70% of all fresh water bodies in Europe are part of a trans-boundary river basin !!





INSPIRE Directive & Implementing Rules

- The INSPIRE Directive lays down general rules to establish an Infrastructure for Spatial Information in Europe to support environmental policies, and policies which may have an impact on the environment
- INSPIRE is built on the SDIs established and operated by the Member States
- **Implementing Rules** (Legal acts providing the details necessary for interoperability)
 1. Metadata
 2. Interoperability of spatial data sets and services
 3. Services (discovery, view, download, transform, invoke)
 4. Data and Service sharing (policy)
 5. Monitoring & reporting



INSPIRE thematic scope

Annex I

1. Coordinate reference systems
2. Geographical grid systems
3. Geographical names
4. Administrative units
5. Addresses
6. Cadastral parcels
7. Transport networks
8. Hydrography
9. Protected sites

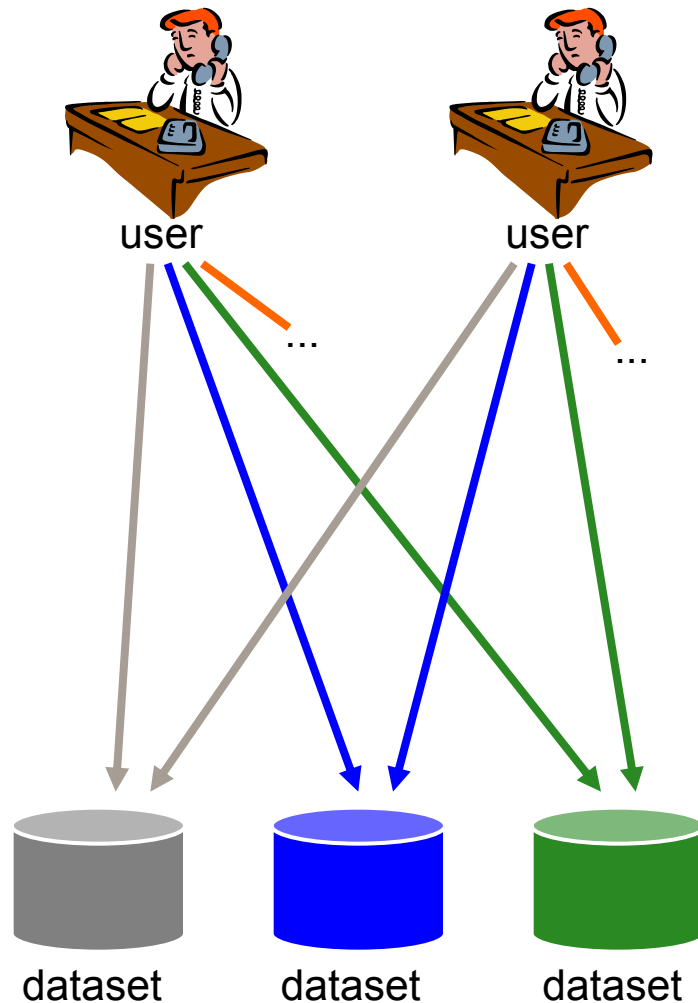
Annex II

1. Elevation
2. Land cover
3. Ortho-imagery
4. Geology

Annex III

1. Statistical units
2. Buildings
3. Soil
4. Land use
5. Human health and safety
6. Utility and governmental services
7. Environmental monitoring facilities
8. Production and industrial facilities
9. Agricultural and aquaculture facilities
10. Population distribution – demography
11. Area management/ restriction/regulation zones & reporting units
12. Natural risk zones
13. Atmospheric conditions
14. Meteorological geographical features
15. Oceanographic geographical features
16. Sea regions
17. Bio-geographical regions
18. Habitats and biotopes
19. Species distribution
20. Energy Resources
21. Mineral resources

Data interoperability

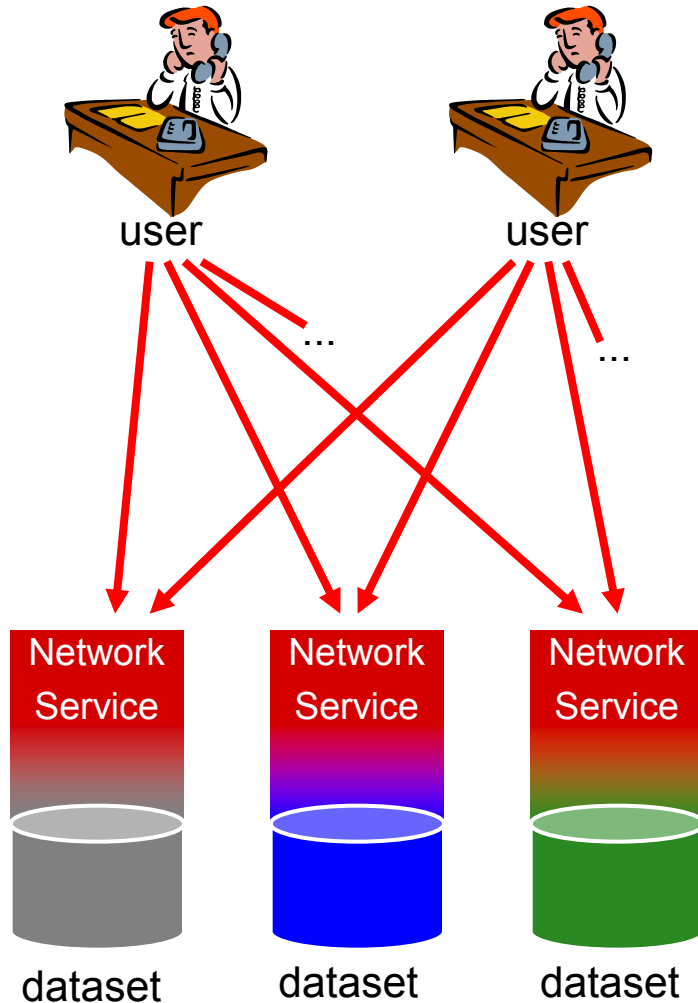


The starting point ...

- Access to spatial data in various ways
- User has to deal with interpreting **heterogeneous data** in different formats, identify, extract and post-process the data he needs
→ **lack of interoperability**



Data interoperability



... and what INSPIRE is aiming at

- Provide access to spatial data via **network services** and according to a harmonised data specification to achieve **interoperability of data**

! Datasets used in Member States may stay as they are

! Data or service providers have to provide a transformation between their internal data model and the harmonised data specification



We are beginning to reap the benefits

- We are starting to see applications built on INSPIRE of real substance to citizens (e.g. Air quality).
- The cross-border dimension of European policy and action is critical to millions of citizens and businesses.
- This Meeting is an excellent and timely opportunity to take the measure of the value of INSPIRE for Europe.