



National Service for the
Implementation of Regulations
Ministry of Economic Affairs



Inspire for the greening of the CAP

Closing the gap

Frans van Diepen

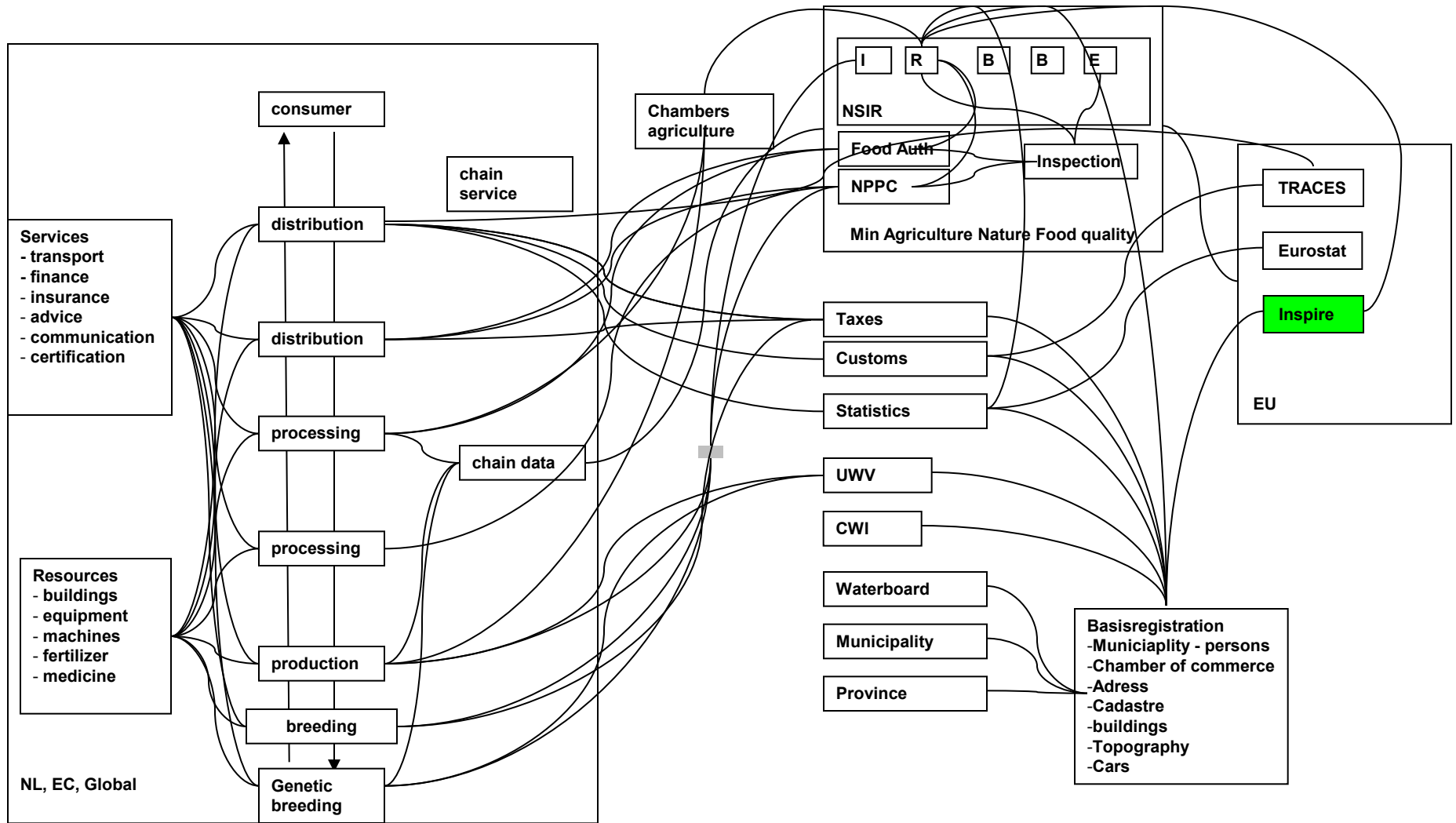
Inspire for the greening of the CAP | March 4, 2013



Greening the CAP Outline

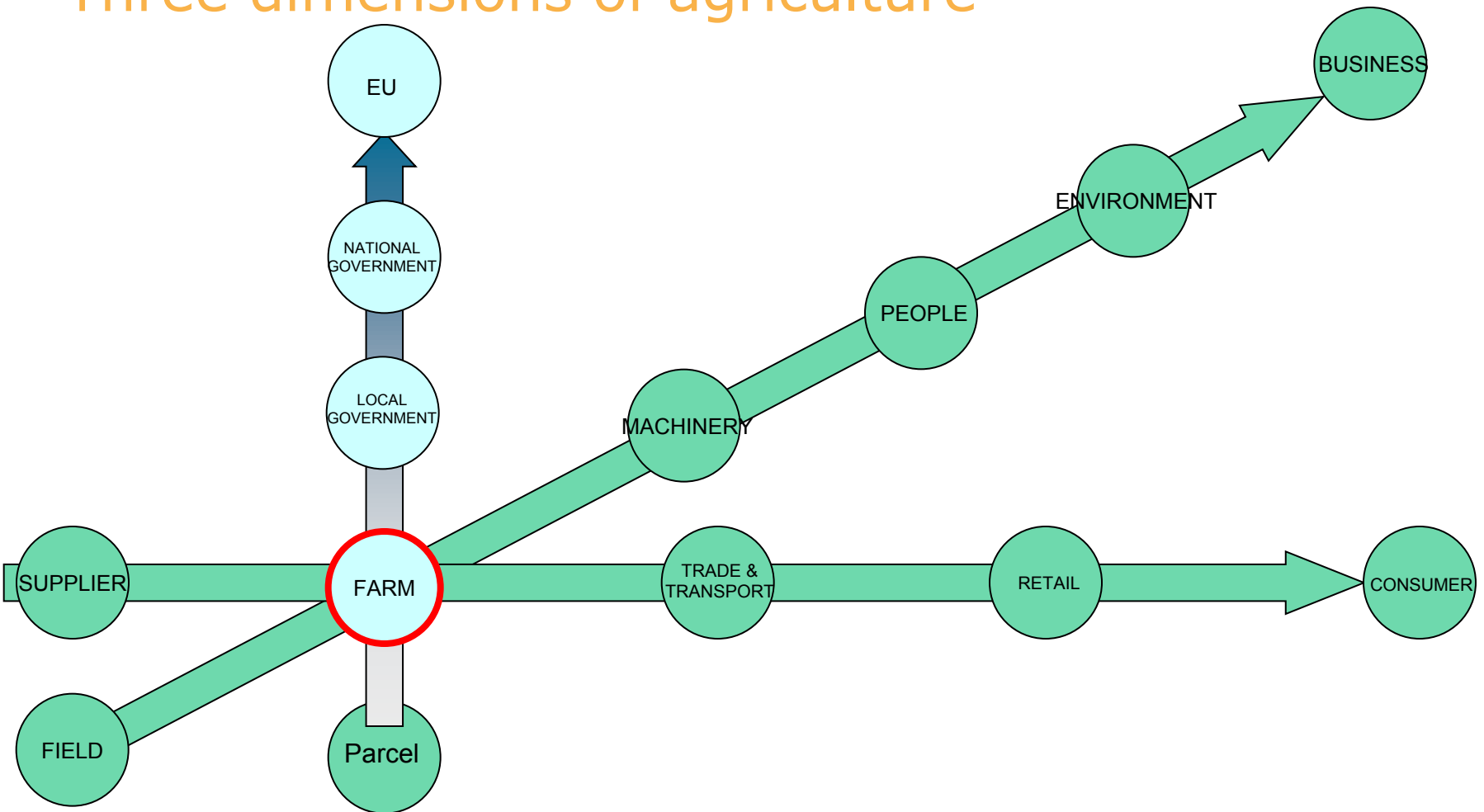
Greening the Common Agricultural Policy
Greening the Common Agricultural Production

- The agri information structure
- Result of inspire
- Impact on the agri information structure for green production



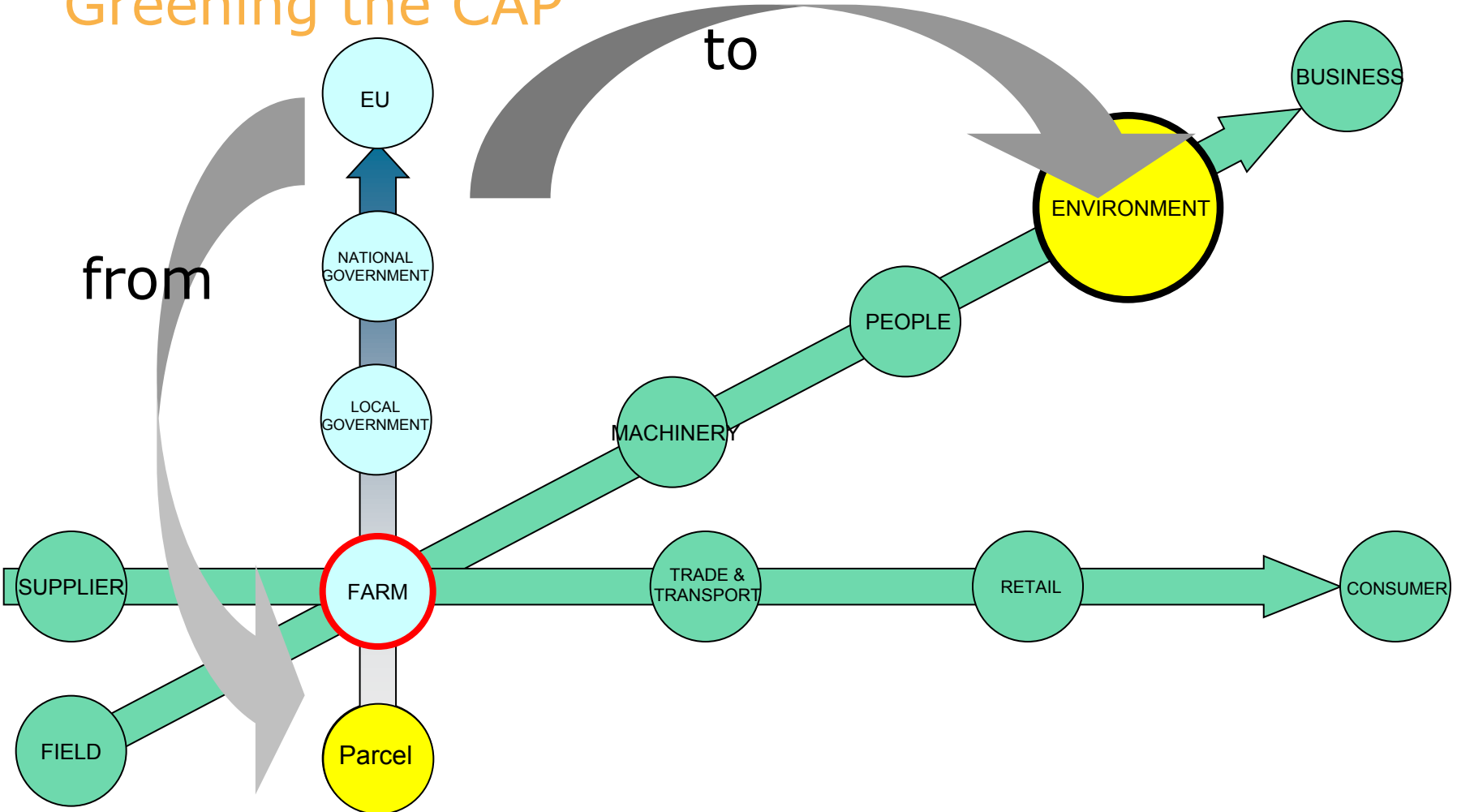


Three dimensions of agriculture





Greening the CAP





From fragmented information exchange

Present

- many domains
- many data definitions
- Stand alone information exchange processes
- Paper based <> electronic exchange
- No reuse of data

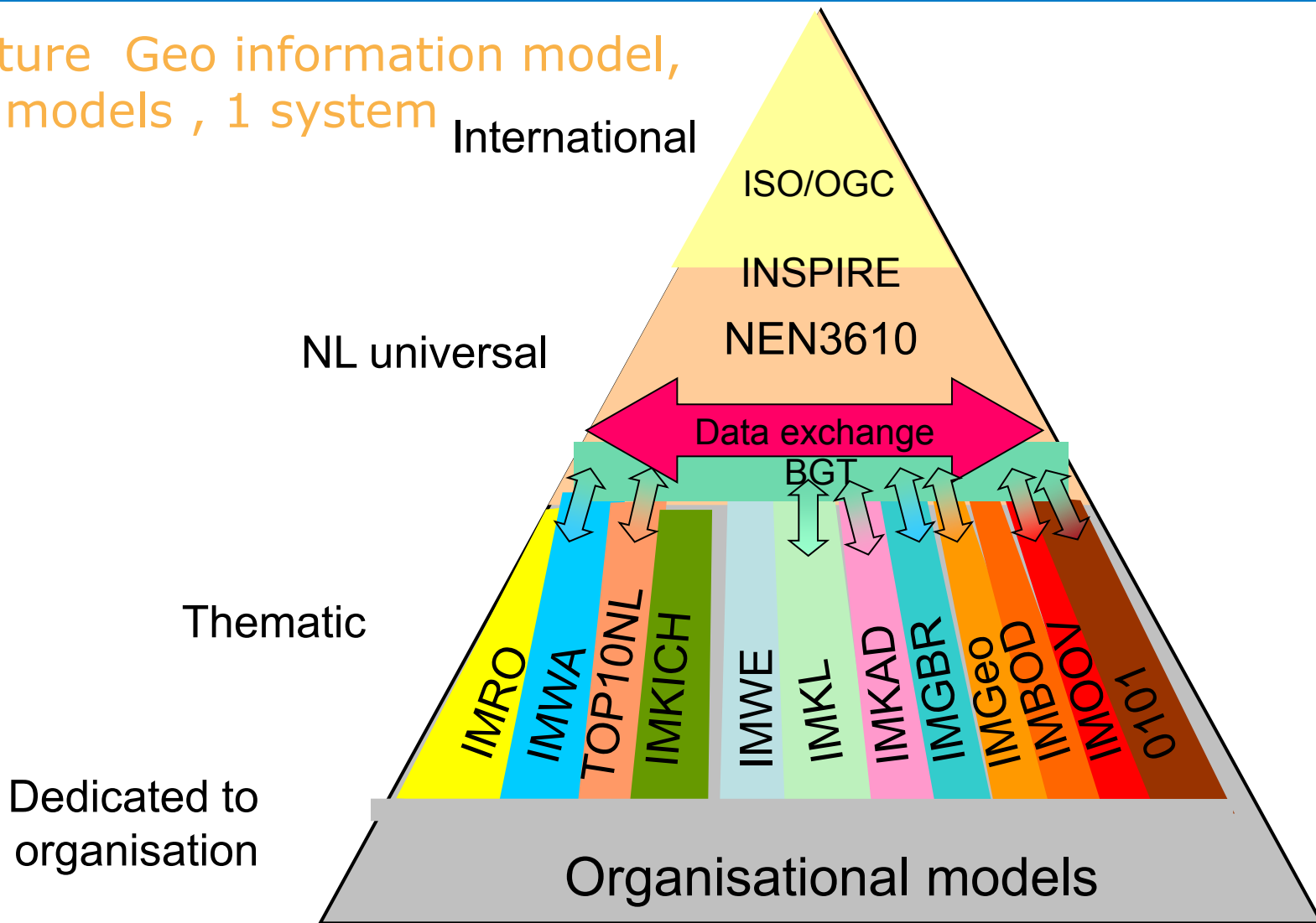
Required

- data harmonisation
- protocols / standard e-messages
- integration with the production chain

To structured information exchange between all business partners



NL Structure Geo information model, n theme models , 1 system



Opgeven perceelsgegevens
Geef hieronder de eigenschappen van het geselecteerde perceel op.

Overgangsdatum *i*
15 06 2007

Beteelde opp (ha) *i*
7,59

Gebruikstitel *i*
Selecteer gebruikstitel

Gewas *i*
Selec Selecteer gewas omschrijving

Relatienummer vorige gebruiker *i*

Reden *i*
Selecteer reden

Ok Annuleren

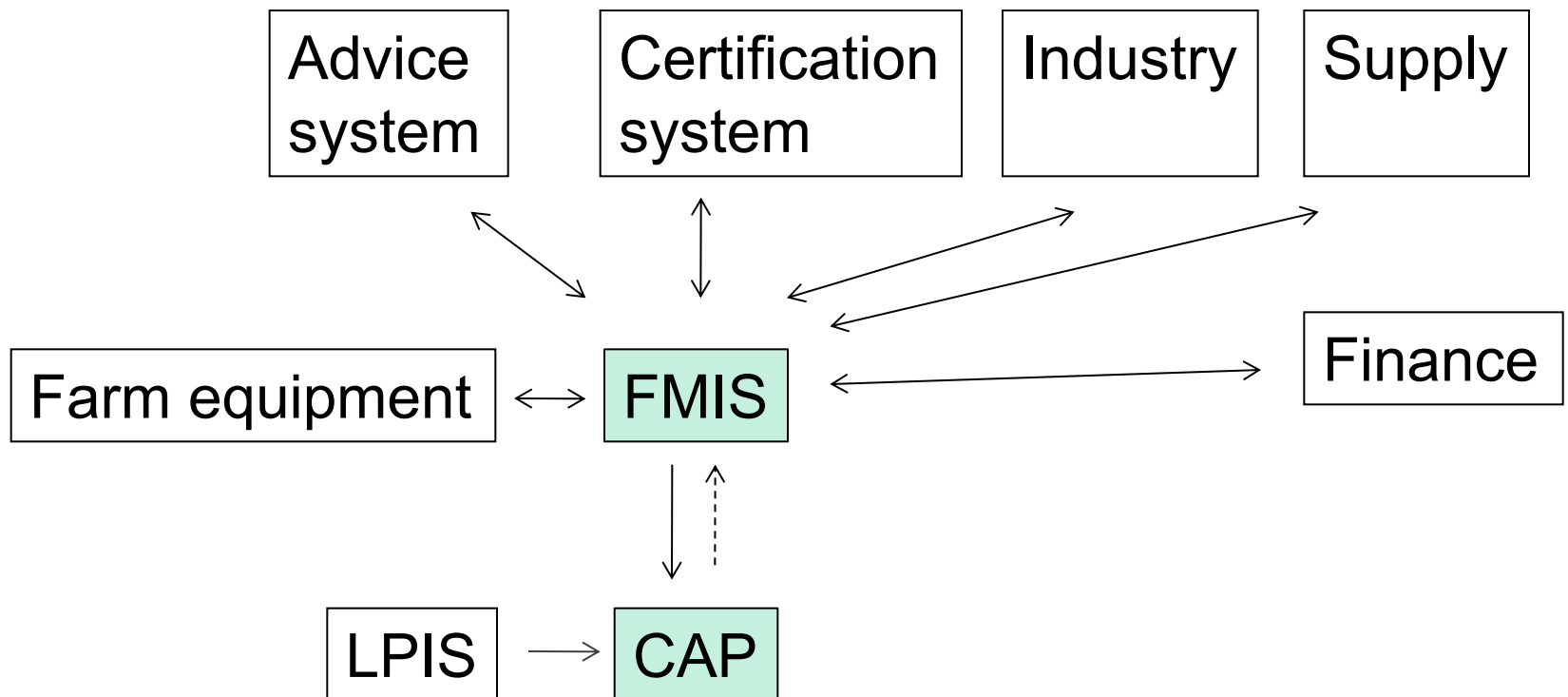
0 0.05 0.1 0.2 Kilometers

Uw gewaspercelen (ha)
 Topografische grenzen
 Gewasperceelsgrenzen
 Incompleet perceel

- for farmers the CAP application is a stand alone system
- no integration with the farm management
- environmental information is not included

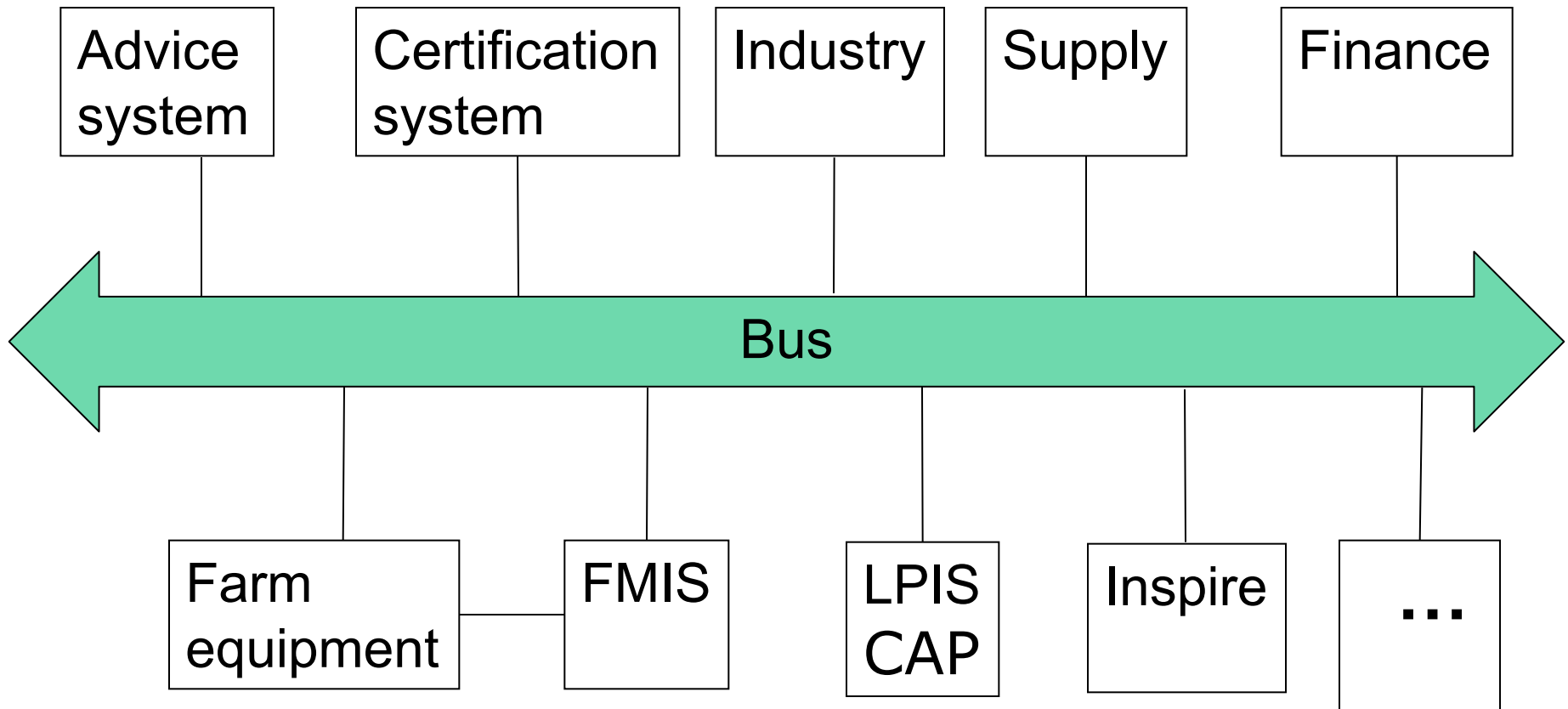


The structure with standalone LPIS - CAP





The integrated infrastructure





Results of Inspire

Provide Framework

Network and infrastructure

Common datamodels

Implementing metadata, search, view and retrieval

Opportunity to use spatial data for
Government, Business and Civilians

Q1. Is data the same as information

Q2. How can agriculture benefit from Inspire

Q3. How to incorporate Inspire data into agricultural processes and
back



harmonisation information exchange in agri food





Programs for improving information position of Agri

- Support RTK
- Development of editeelt++
- Platform for standardisation:
- + Harmonise agriculture e-messages and i-model with national (geo) information models
- + Handbook /guidance for developing e-messages in agriculture and horticulture
- + [Development of the I-model Agriculture \(IMLB\)](#)

Partners:

Min Econ Affairs, Geonovum, Agroconnect, Florecom, Frugicom, Edibulb



Information Model Agriculture

General, expandable model

Focus on :

- e-GDI Internet application for CAP application/payment:
- support for information about parcels, fields, plots
- support for livestock farming (animal registration)
- support for annual agricultural survey (and Eurostat)

Harmonized with

- other sectoral information models and NEN3610
- UN/CEFACT, Inspire, LPIS
- editeelt++, horticulture , florecom messages

Support for on-farm , B2G and B2B



Harmonised with other I-models

Identifiers: unique parcels number

Codelists: defined as datatypes

Definitions: subtle but essential differences clarified

Model is applicable in other domains.

Interaction with key registrations BAG, NHR, BGT
(buildings address, businesses, large scale topography)

Linked with other models IMNature, EDITeelt (plant production),
Inspire



Proces for I-model agriculture

Partners

Cooperation of private business and government
(AgroConnect, ZLTO, Tuinbouw Digitaal, nVWA, DR, ICTU, Wageningen UR, Geonovum, Min EZ, ...)

Conditions

Open standards
NEN 3610, IMGeo, IMLG, IMNa, EDITEelt, ISObus, Inspire
Keyregistrations BAG, NHR, GBA, BGT
UN/CEFACT, GS1, Global Gap,
methodes and tools UML, CCL, Enterprise Architecture

Applicable for

NSIR processes, B2G, for CAP, water and mineral regulations
Branche implementations, B2B: culture, processing, consultancy, trade,
Tracking en Tracing,
B2G and G2G import - export (Client, e-CERT)

Extendable

EDITEelt 4.0, Frugicom, arable farming, horticulture, animal production, dairy farming ,
NAK product certification, quality assurance
Reuse of data (PDOK, Inspire)



Model structure

Fysical / topografic:

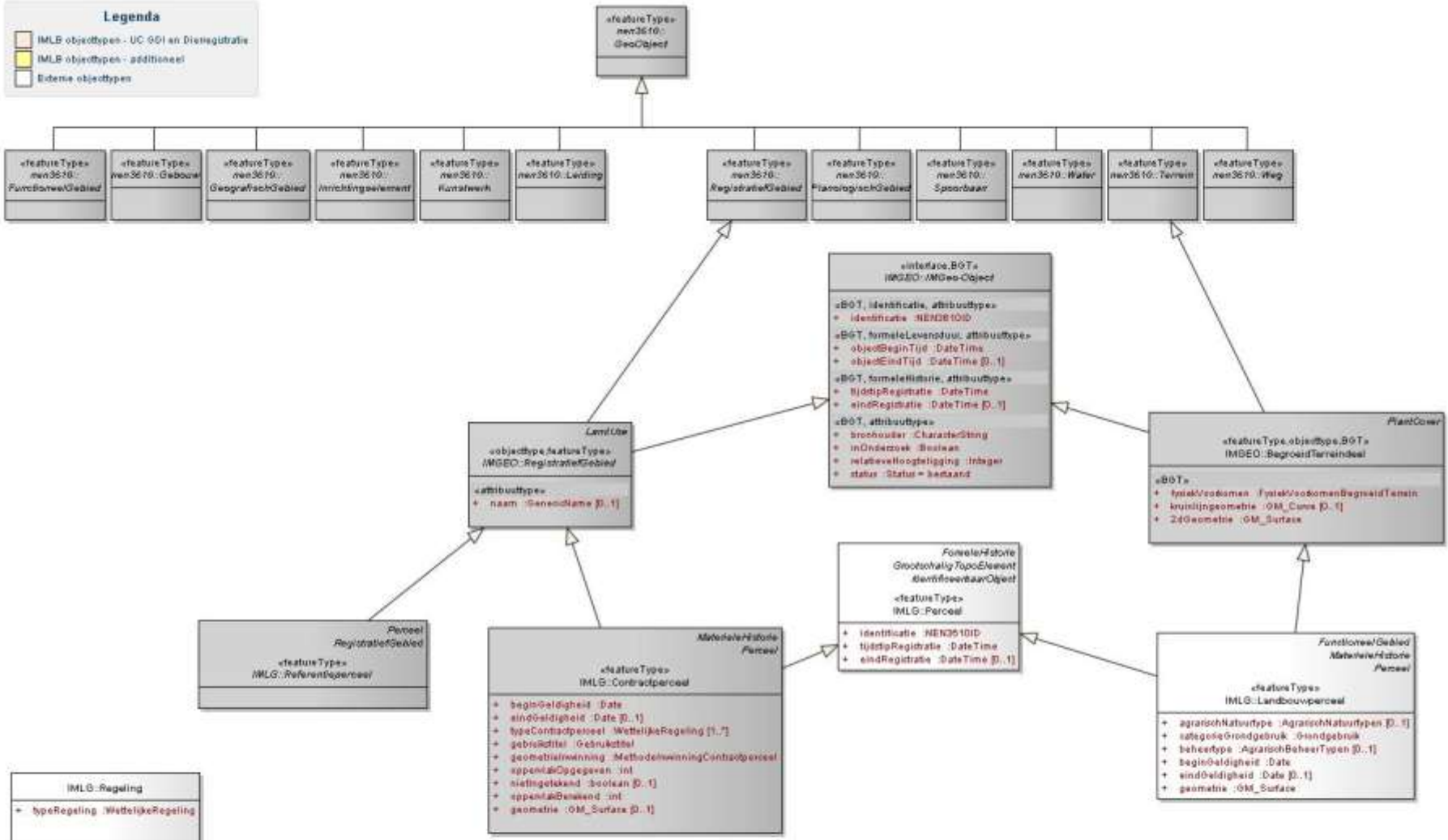
- geo objects (area, construction)
- non geo objects (animals, enterprise, person)

Logical / administrative / practice:

- reference area
- contract, regulation subject
- operation planned and performed

Legenda

- IMLB objecttypes - UC 001 en Dierregistratie
- IMLB objecttypes - additioneel
- Etenia objecttypes



IMLG-Regeling

- + typeRegeling : WettelijkeRegeling

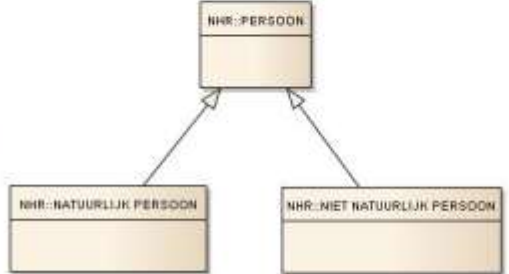
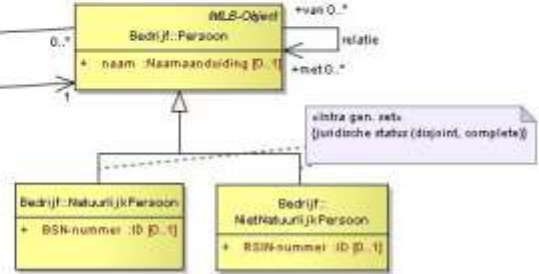
IMLB-Object

Regeling: Regeling

- + aanduiding : NaamRegeling
- + type : TypeRegeling
- + categorie : CategorieRegeling [0..1]
- verdielbaar
- + materieleVerdie : MaterieleVerdie

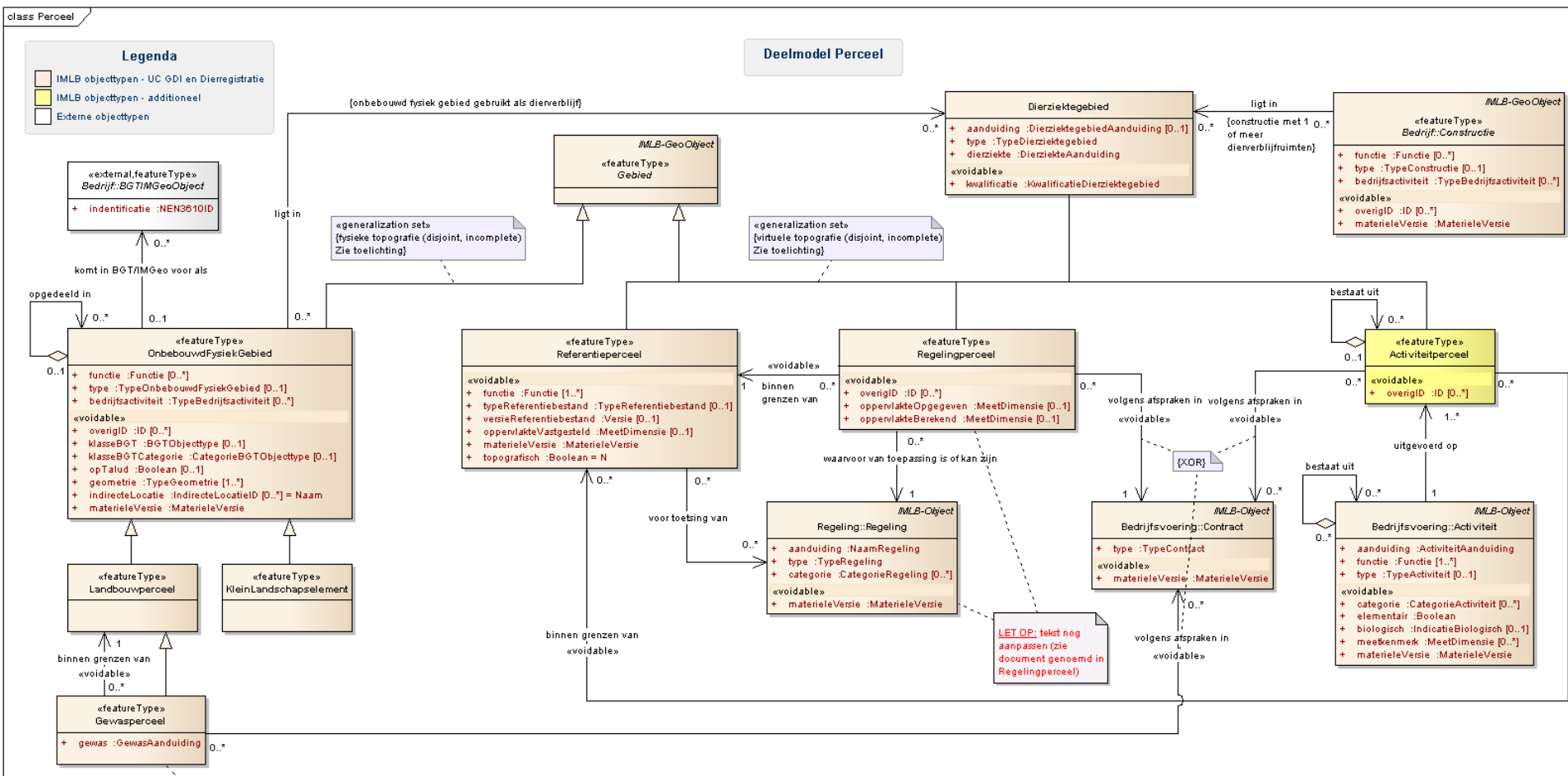
IMLB object heeft alleen grondgebonden regelingen (zie ook de 1..* relatie die het heeft met IMLB Referentieperceel). In IMLB is een regeling (0..*) niet een grondgebonden. Ze kan het bv (subsidie)regelingen als Dienstverlening Productoren en Verbetering Dierenwelzijn zoominonen.

Zie ook deelmodel IMLB in andere modellen





Section parcels





Conclusions

Inspire

- provides a framework
- supports the sharing of data
- lacks the connection to (Agri)business

Information model agriculture

- provides a link between the agri business process and data
- support the agri business process (on farm)
- support the information exchange for the CAP
- includes environmental information

Greening the CAP

- Open up inspire data at farm process level
- bidirectional



Thank you.

Frans van Diepen

f.van.diepen@minInv.nl